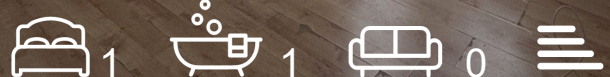




4 Crowland Road

, London, N15 6UT

£1,500 Per month



Floor Plan



Area Map

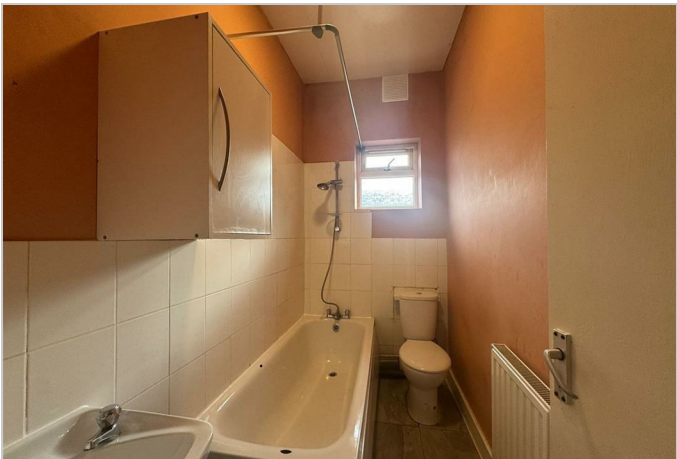


Energy Efficiency Graph



Viewing

Please contact our Sunshine Estates Office on 020 8066 5055 if you wish to arrange a viewing appointment for this property or require further information.



Sunshine Estates is delighted to present this lovely one-bedroom flat located in Tottenham.

This well-presented home offers a comfortable living space and the added benefit of a private garden, ideal for relaxing or entertaining. The property is conveniently positioned close to excellent transport links, with Harringay Green Lanes Overground Station approximately a 4-minute drive away, Harringay National Rail Station around 5 minutes by car, and Turnpike Lane Underground Station (Piccadilly Line) reachable in about 6 minutes by car, providing easy access into Central London.

The flat also enjoys proximity to a range of local amenities, including green open spaces such as Downhills Park, just a 4-minute drive away, and Finsbury Park, approximately 8 minutes by car. For healthcare needs, North Middlesex University Hospital is around a 10-minute drive, while Homerton University Hospital can be reached in approximately 20 minutes by car. This charming flat is perfectly suited for professionals or couples seeking a peaceful yet well-connected home.

Contact us to day to arrange a viewing and enjoy this new home!



These particulars, whilst believed to be accurate are set out as a general outline only for guidance and do not constitute any part of an offer or contract. Intending purchasers should not rely on them as statements of representation of fact, but must satisfy themselves by inspection or otherwise as to their accuracy. No person in this firms employment has the authority to make or give any representation or warranty in respect of the property.